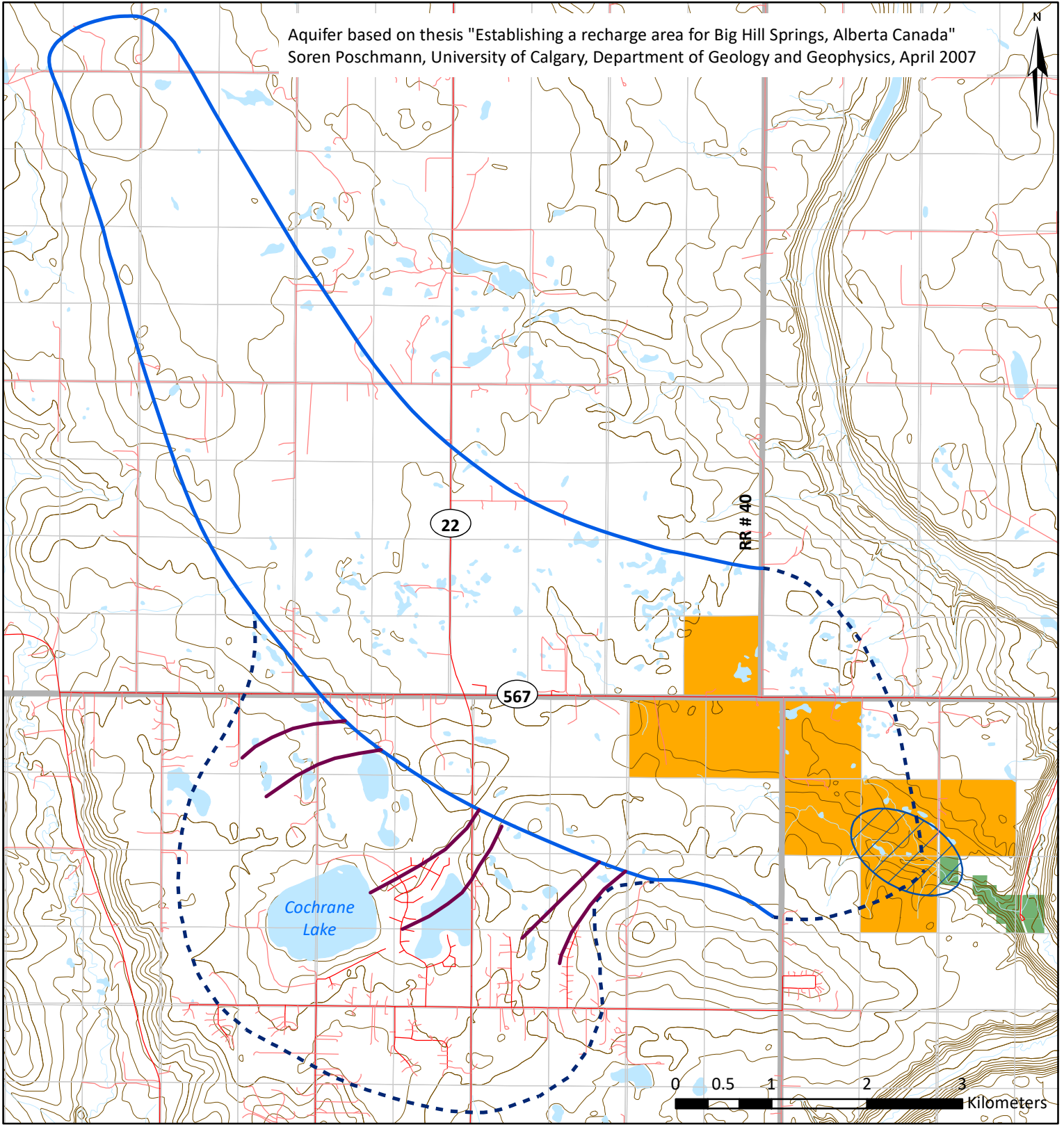


Aquifer based on thesis "Establishing a recharge area for Big Hill Springs, Alberta Canada"  
Soren Poschmann, University of Calgary, Department of Geology and Geophysics, April 2007



Township 27

Township 26

Range 4 West 5 Meridian

Range 3 West 5 Meridian

- |                                      |                                  |                |                 |
|--------------------------------------|----------------------------------|----------------|-----------------|
| Big Hill Springs Discharge Zone      | Estimated Margin                 | Road           | Contour Line    |
| Preglacial Channel Tributaries       | Owned by Gravel Operators        | Stream / River | Quarter Section |
| Preglacial Channel Boundary (approx) | Big Hill Springs Provincial Park | Waterbody      | Township        |